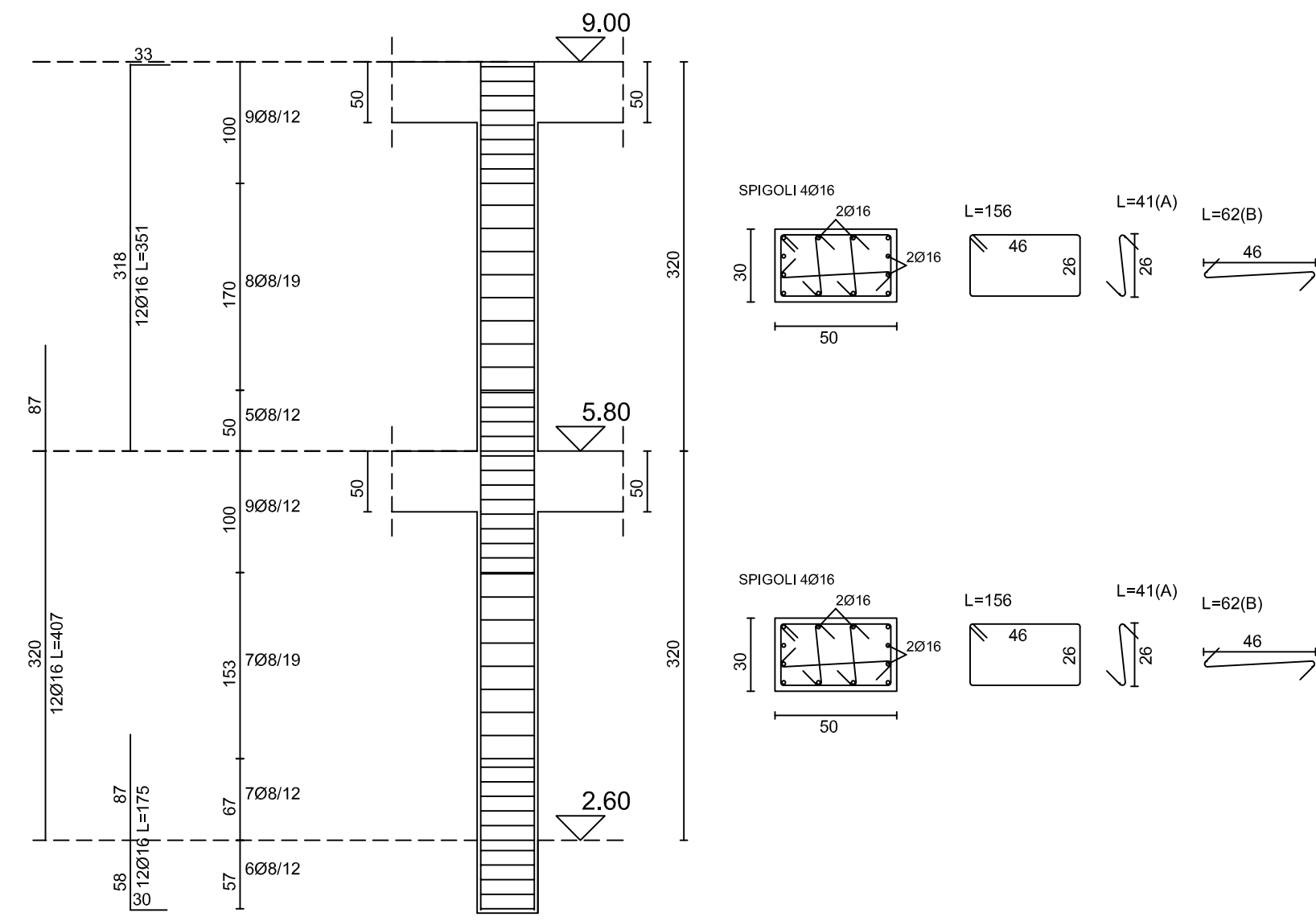
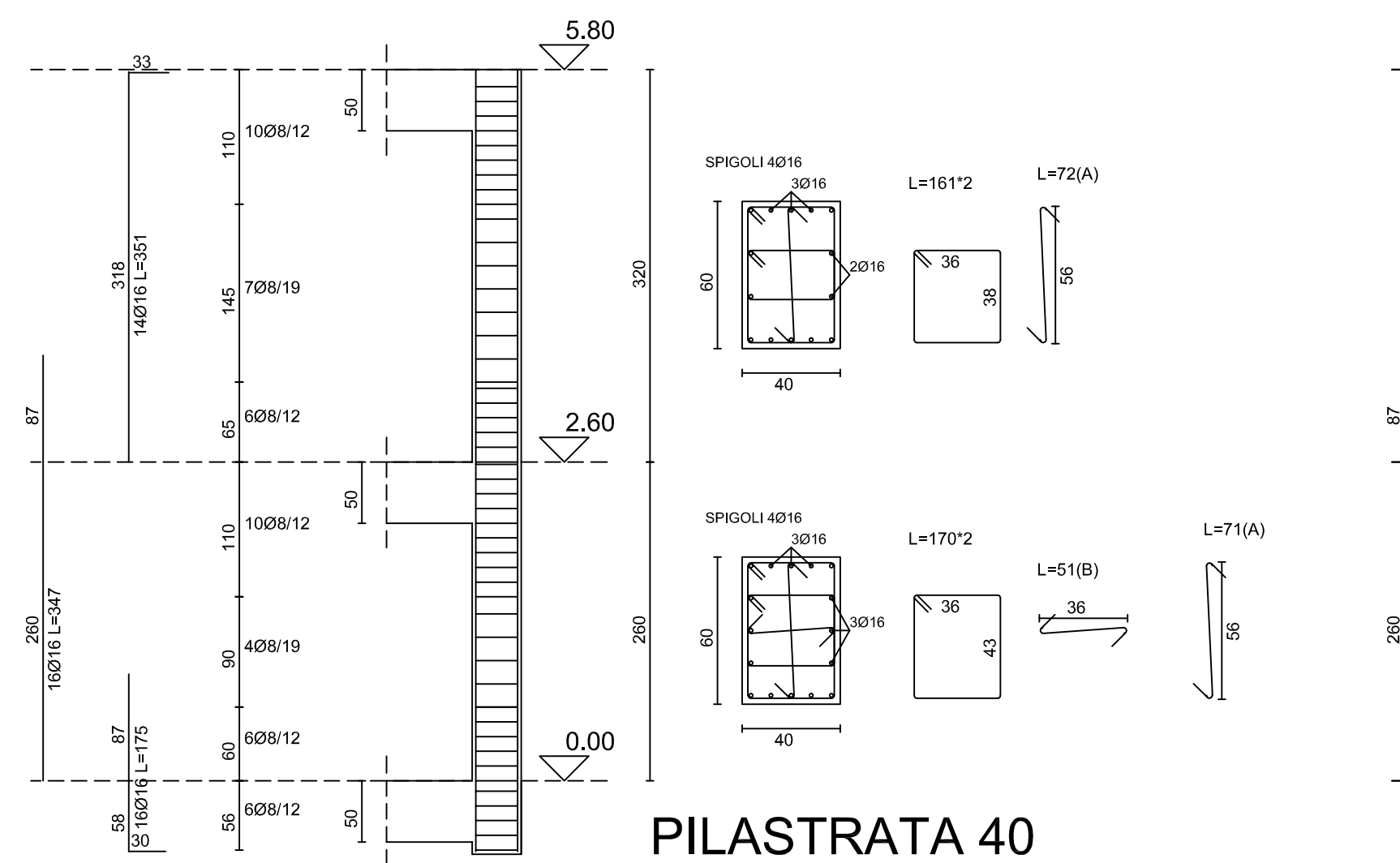


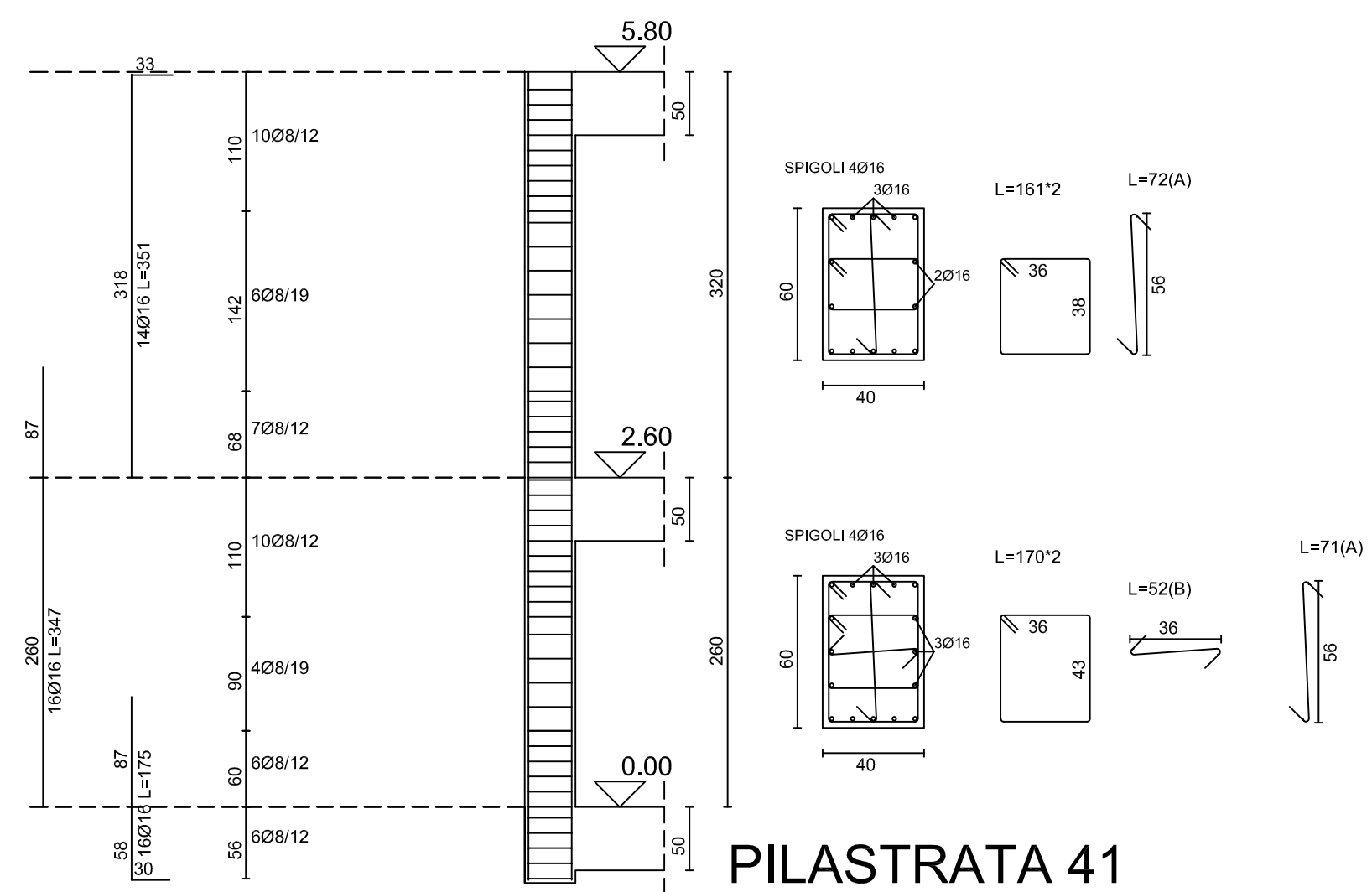
PILAISTRATA 39



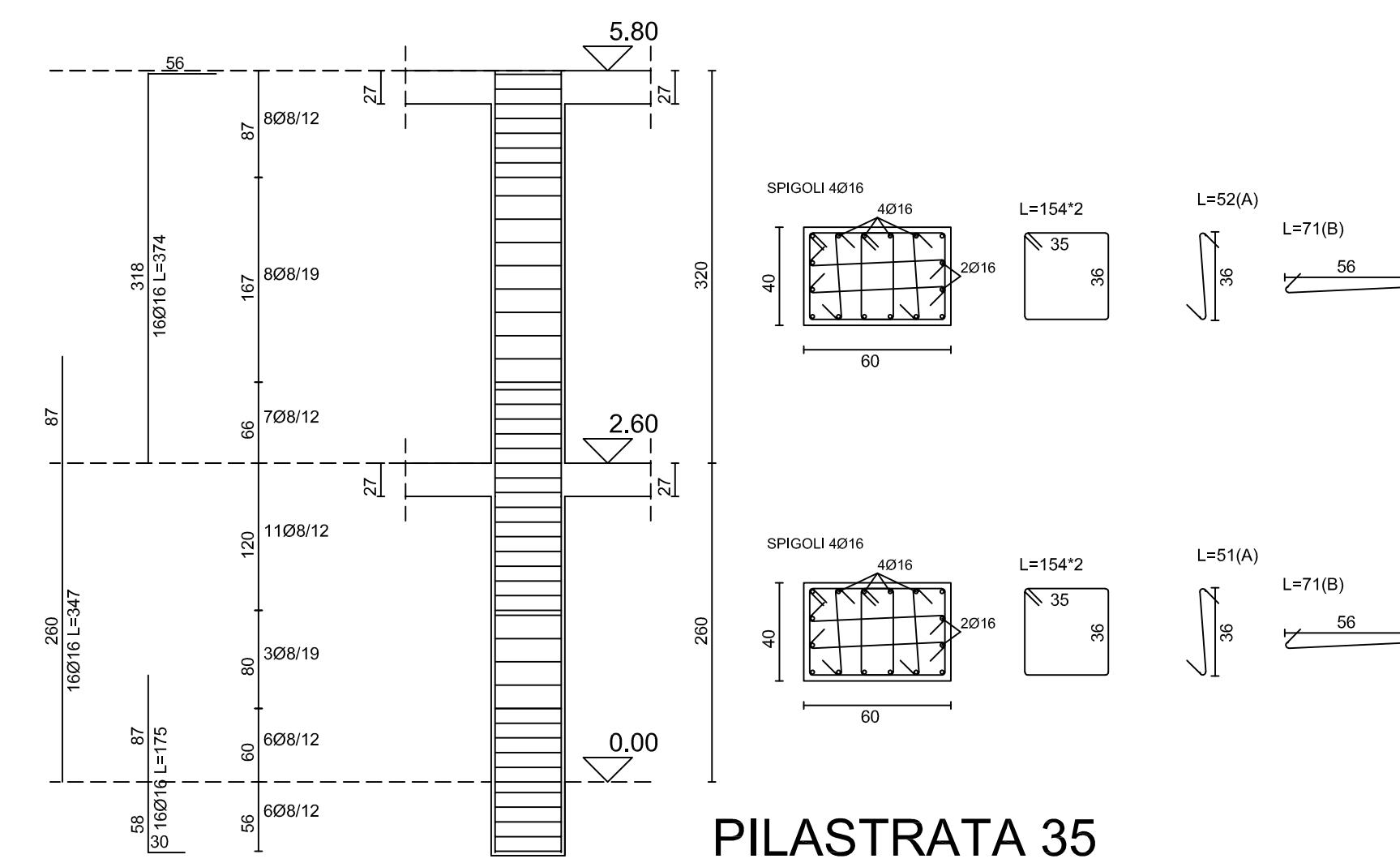
PILAISTRATA 4



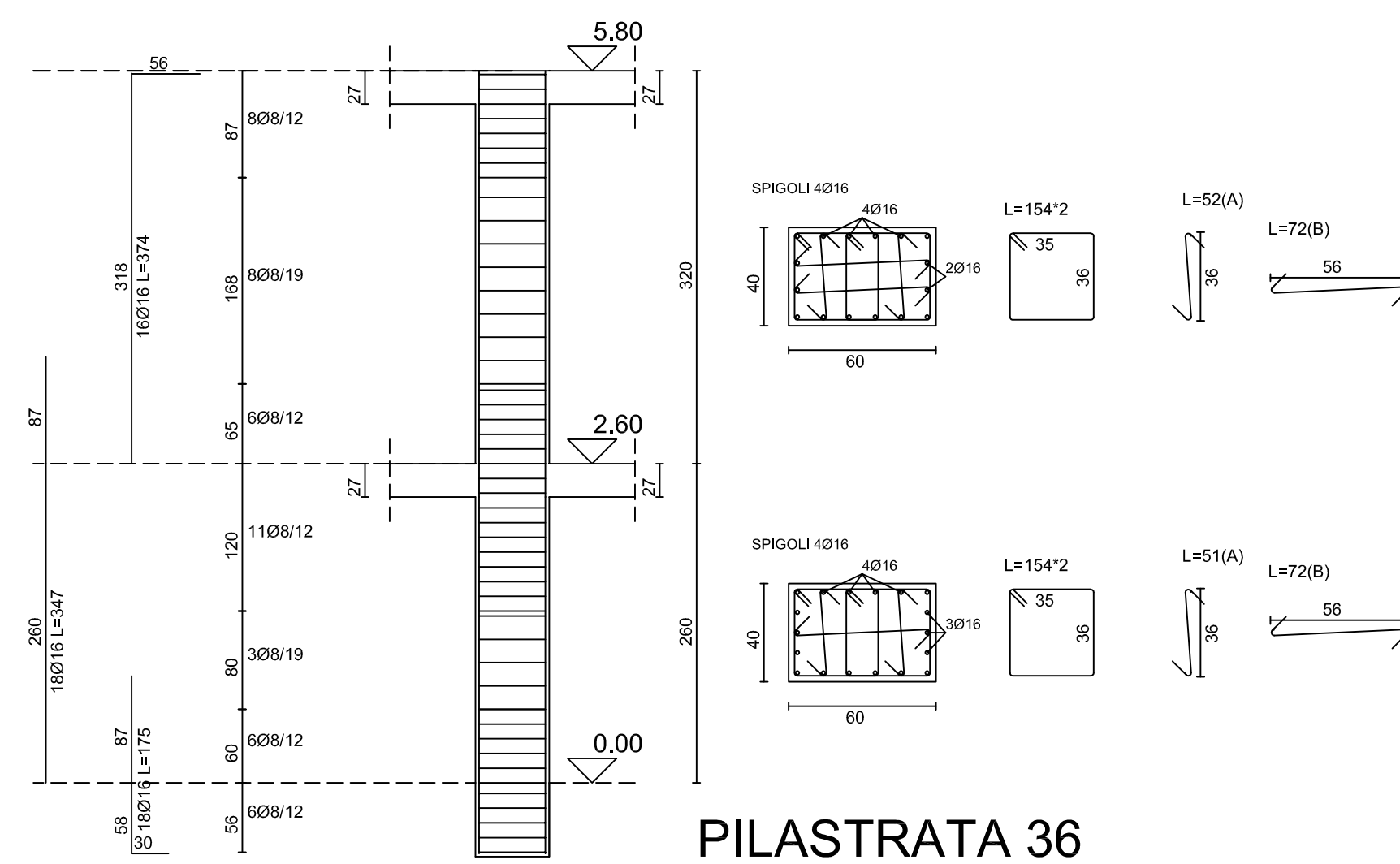
PILAISTRATA 40



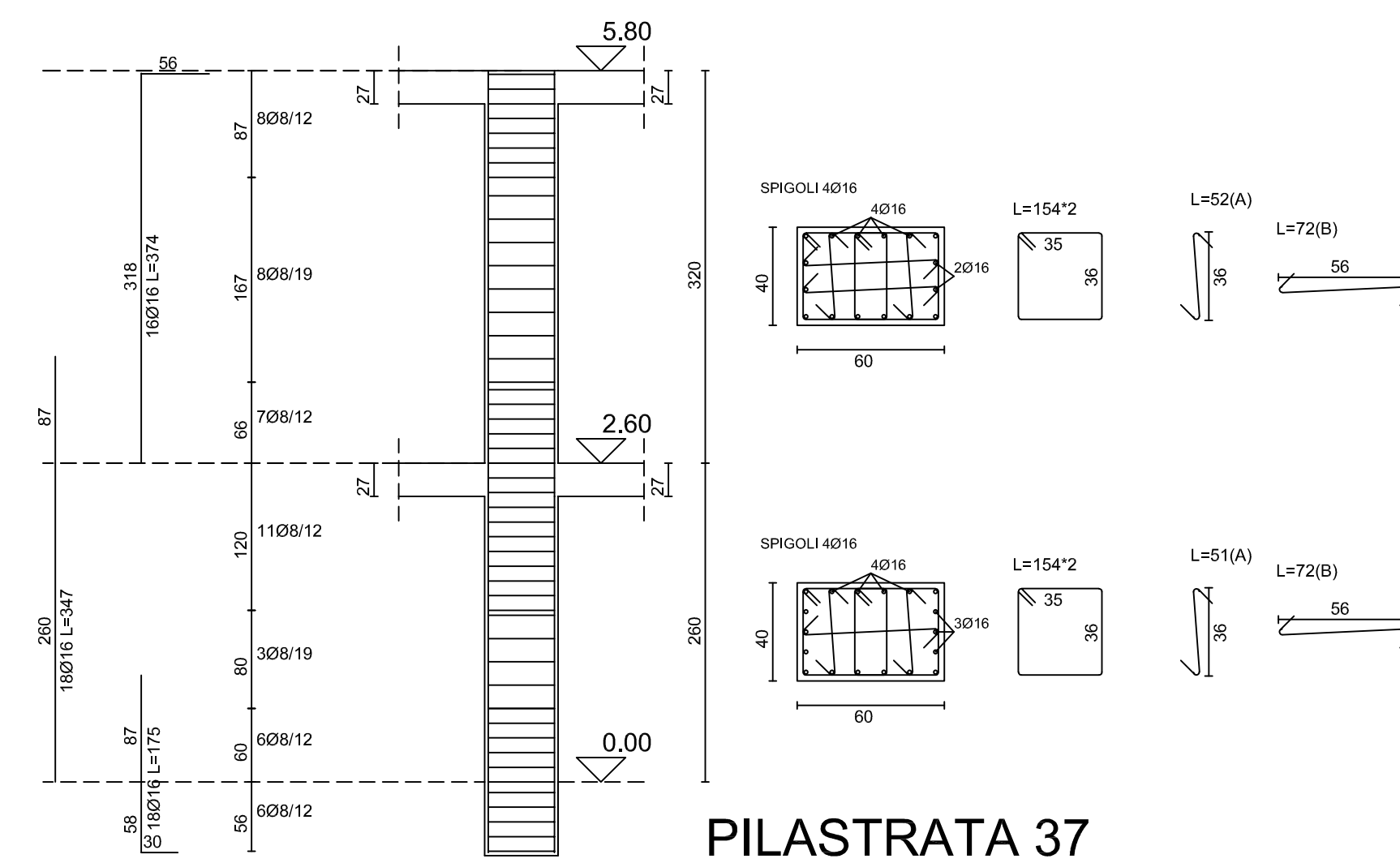
PILAISTRATA 41



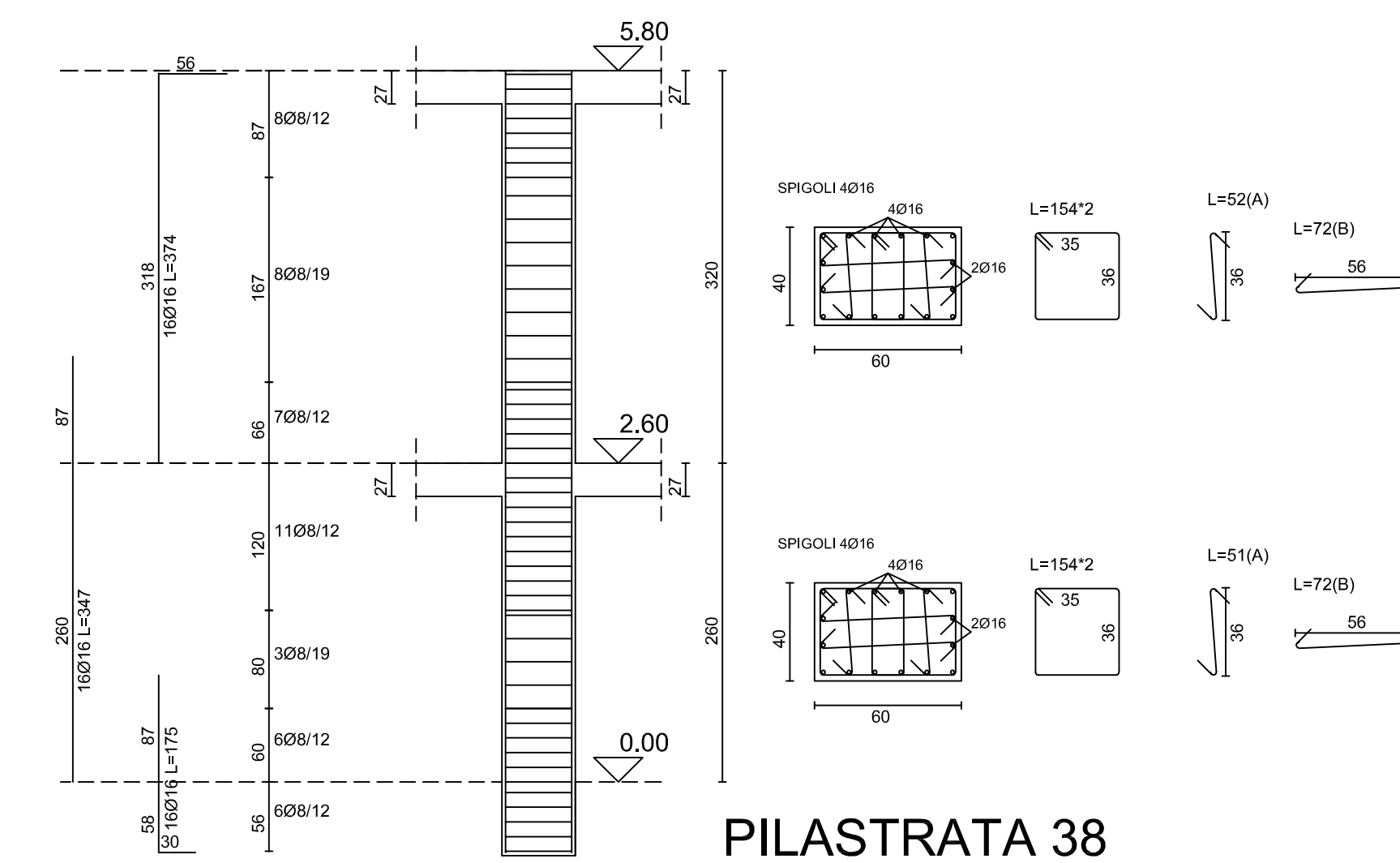
PILAISTRATA 35



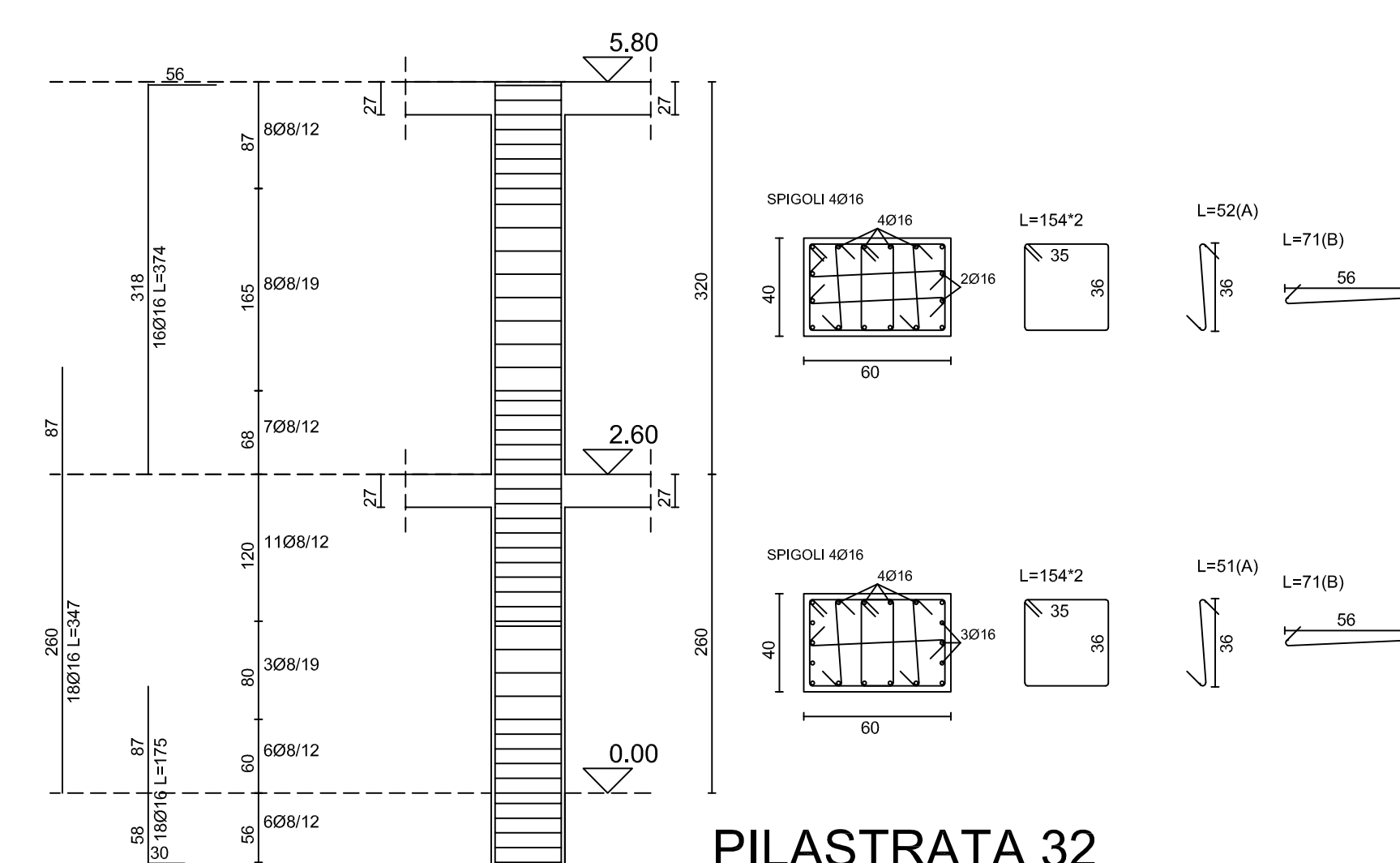
PILAISTRATA 36



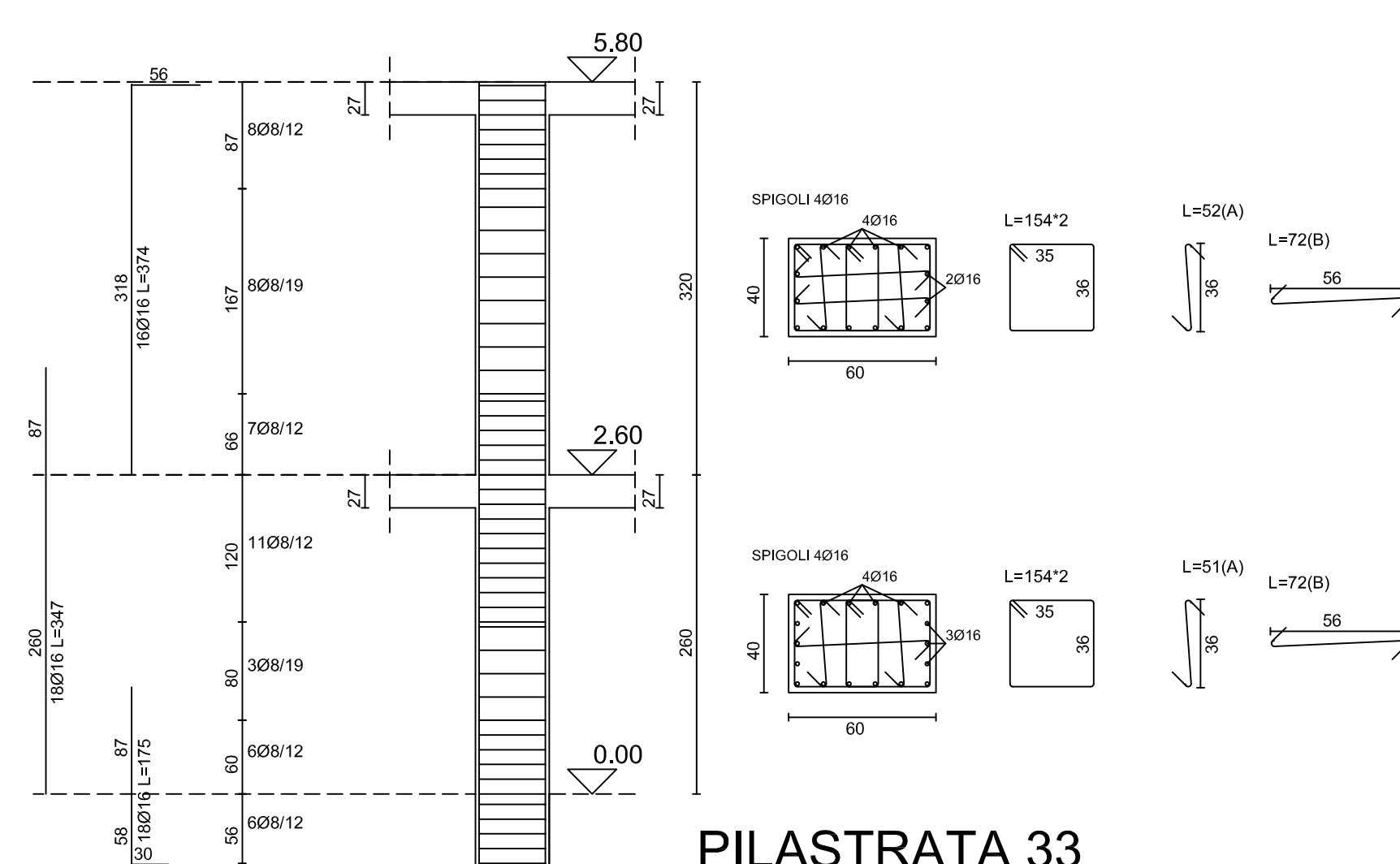
PILAISTRATA 37



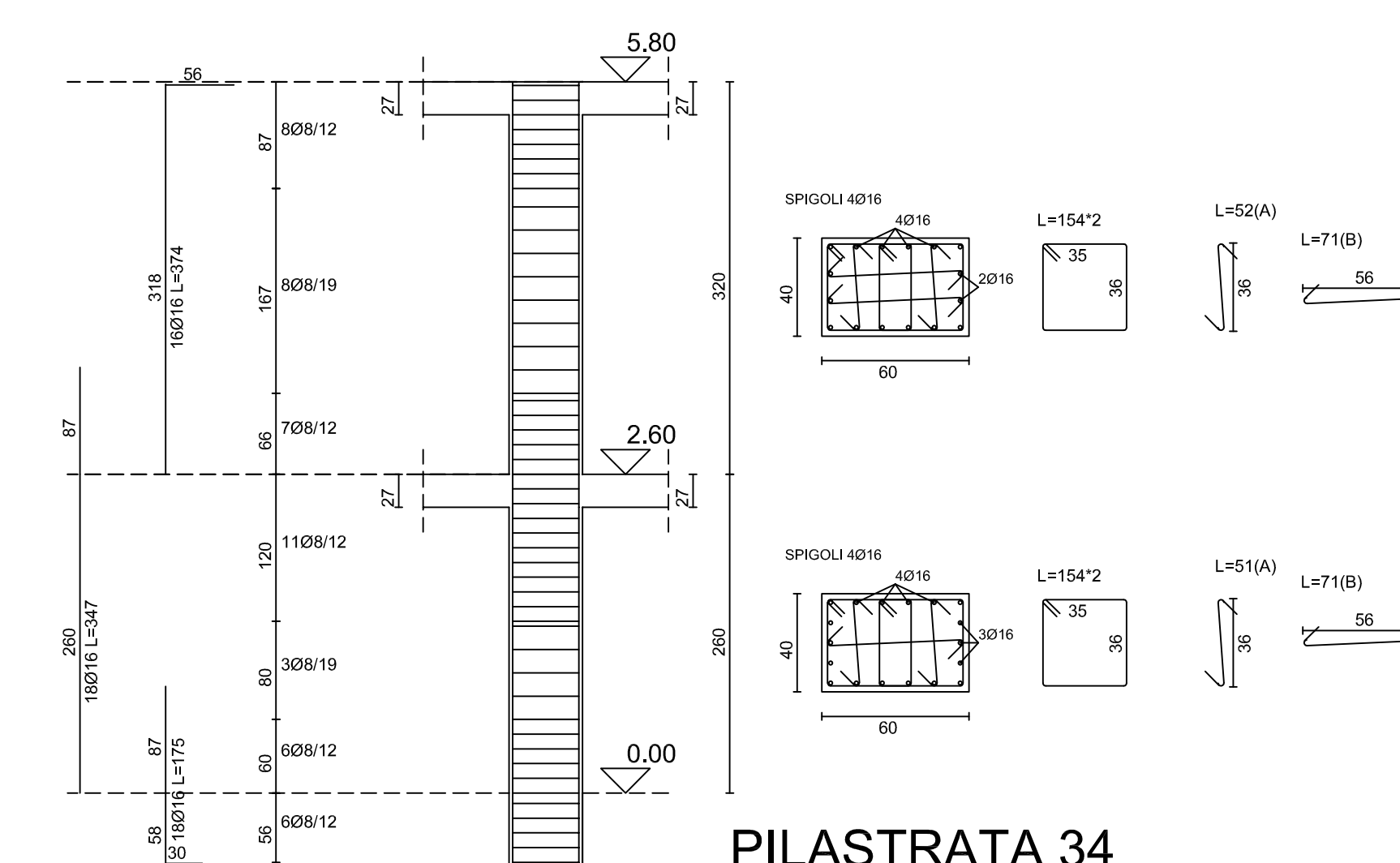
PILAISTRATA 38



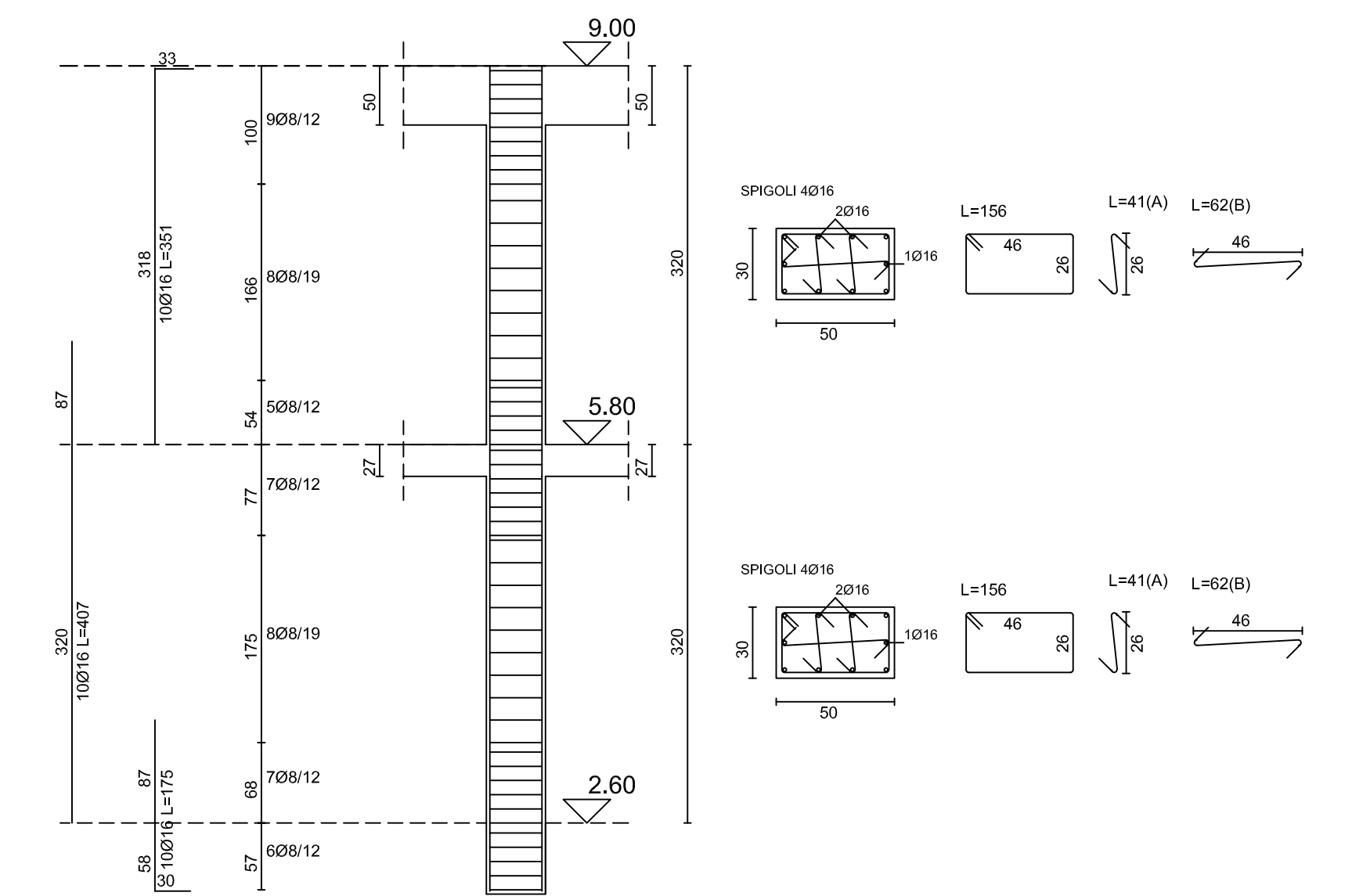
PILAISTRATA 32



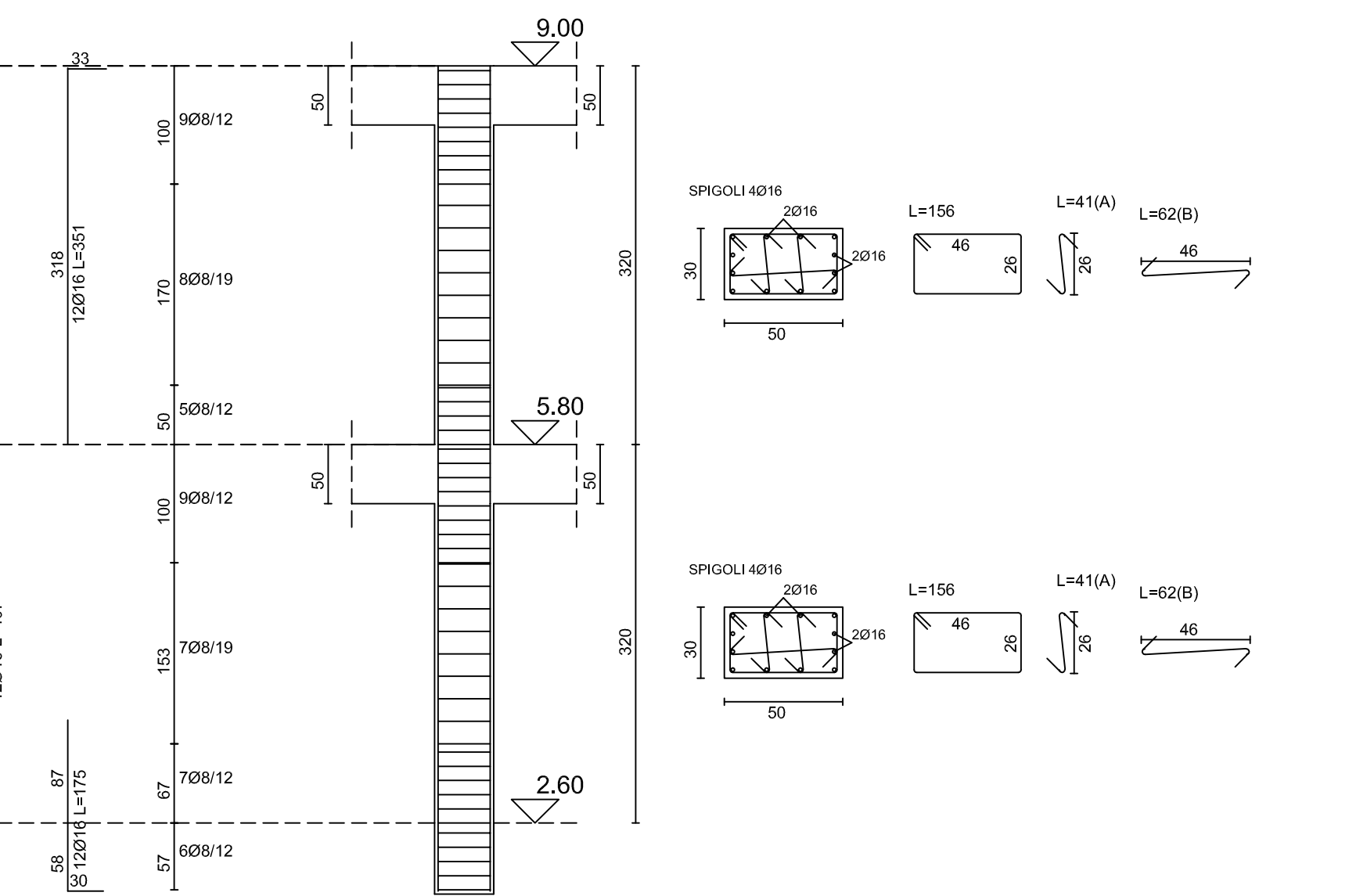
PILAISTRATA 33



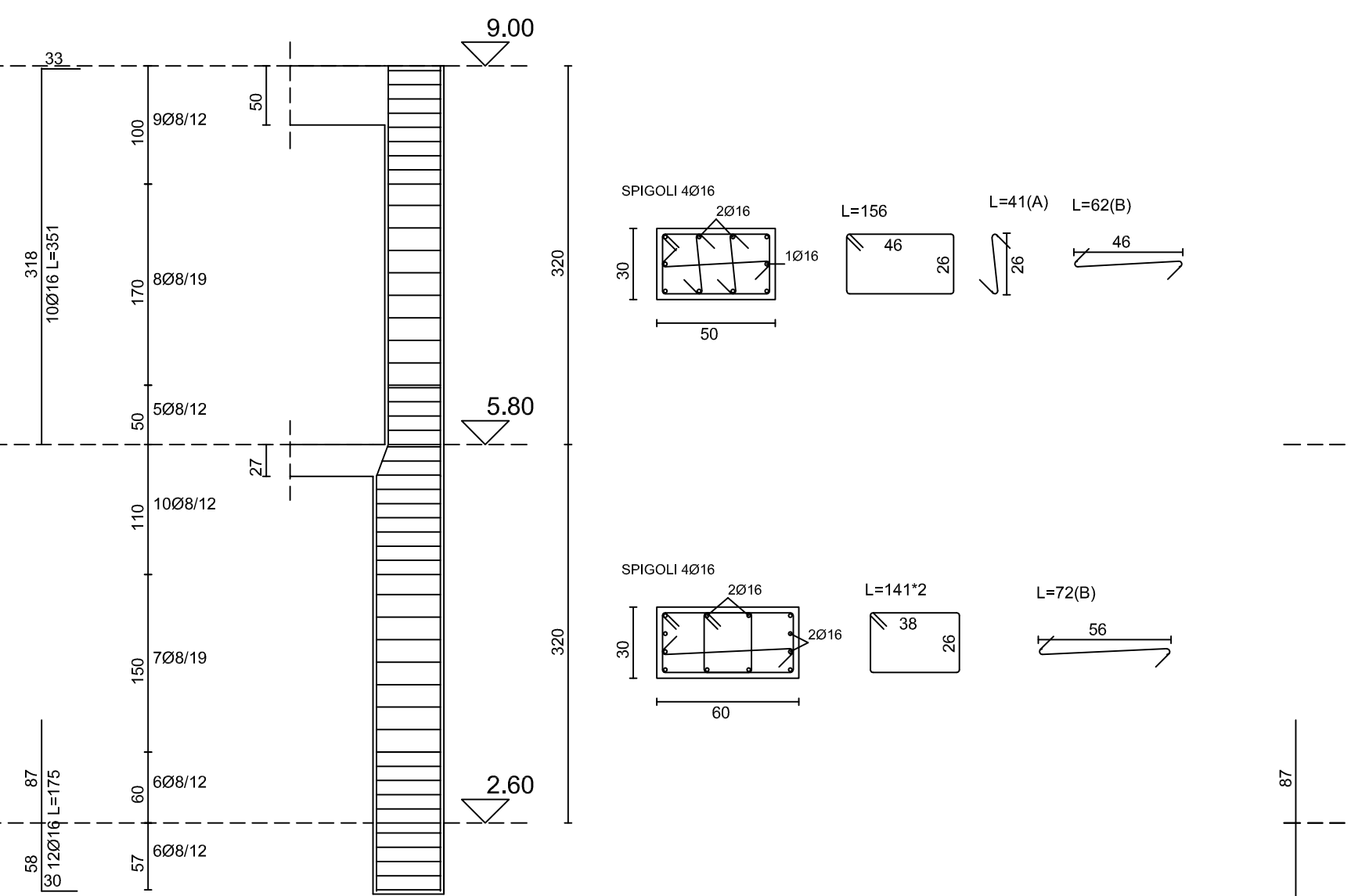
PILAISTRATA 34



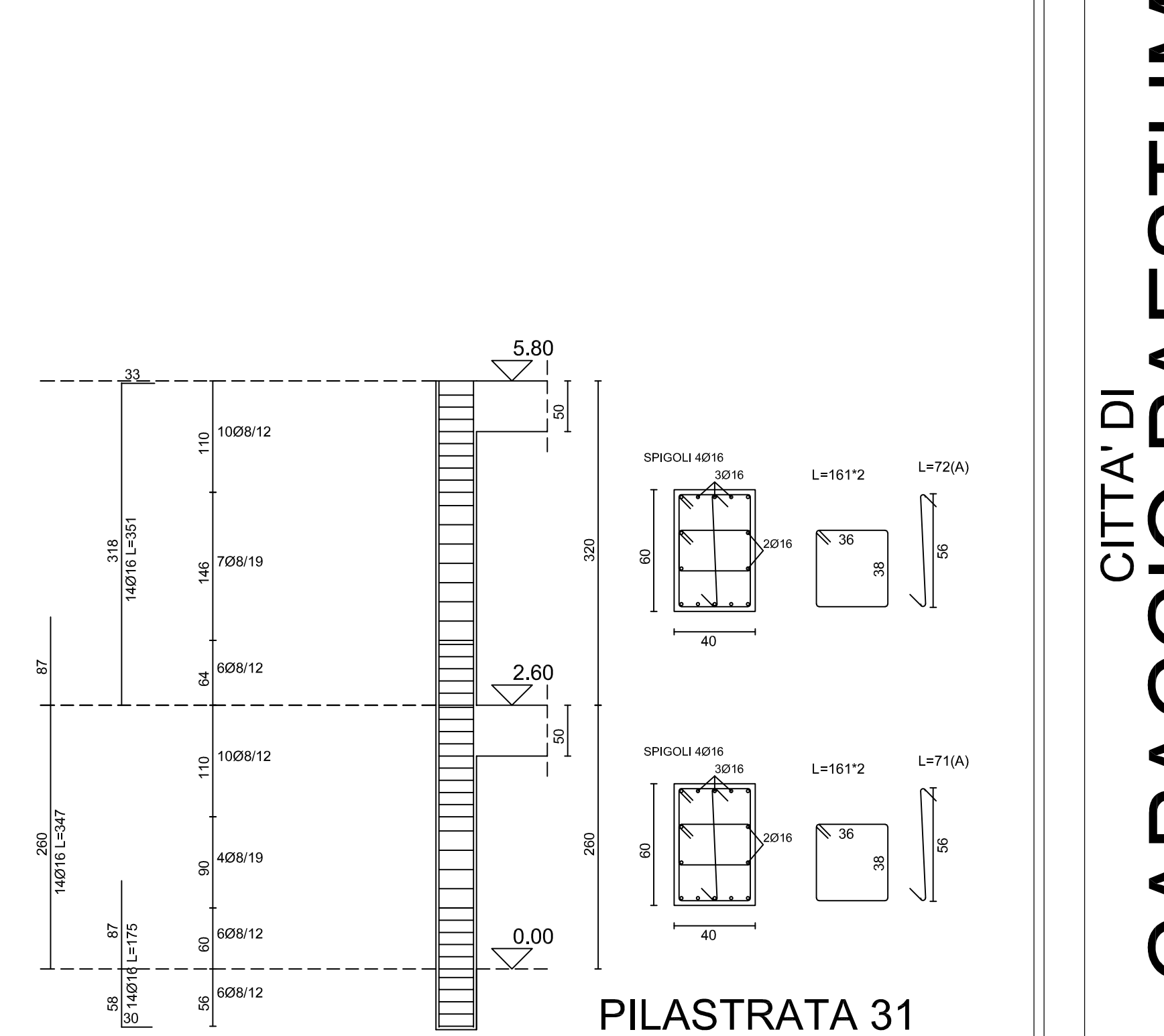
PILAISTRATA 29



PILAISTRATA 3



PILAISTRATA 30



PILAISTRATA 31

CITTA' DI
CAPACCIO PAESTUM

PROGRAMMA INTEGRATO DI EDILIZIA RESIDENZIALE SOCIALE
RECUPERO E RIFUNZIONALIZZAZIONE
EX COMPARTO RURALE DA DESTINARE A
EDILIZIA RESIDENZIALE SOCIALE E SERVIZI
 IN LOCALITA' GROMOLA DI CAPACCIO PAESTUM (SA)

PROGETTO ESECUTIVO

Committente
Città di Capaccio Paestum
(Provincia di Salerno)

Sindaco
Avv. Francesco ALFIERI



Elaborato:
TAV. N. 69.3

STATO DI PROGETTO
FABBRICATO "A"
PILAstrate

Scala: 1:100 Data: AGOSTO 2021

I Progettisti
Ing. Giovanni Vito BELLO
Arch. Gerardina DI FILIPPO

Il R.U.P.
Ing. Federica Turi